

# DRESS REHEARSAL

PAT McGRATH CONCEIVED 23 UNIQUE LOOKS FOR THE SPRING READY-TO-WEAR COLLECTIONS. NOW SHE REVEALS HER CREATIVE PROCESS TO MEGAN DEEM

## ANNA SUI

### THE SKETCH

"We plan the hair and makeup a day or two before a show," says makeup artist McGrath. "For Anna Sui, I was thinking gold lids with a vibrant orange lip."

### THE TRYOUT

"The makeup needed to be more doll-like," she says, "so I opted for a transparent, true red lipstick instead of bright tangerine."



## GUCCI

### THE SKETCH

"The inspiration came from the sexy feline shape of Italian actress Monica Vitti's eyes," McGrath says.

### THE TRYOUT

"Occasionally we do three variations before deciding on the final look," she says. "In other cases, it's 20 or 30."



## OSCAR DE LA RENTA

### THE SKETCH

"Sometimes the designer doesn't mention makeup; our direction could be a painting or an old movie," she says. "Here, it was 'Flemish Avedon.'"

### THE TRYOUT

"Black, winged liner was essential for demure '60s glamour," McGrath says. "A thinner line made it prettier."



## LANVIN

### THE SKETCH

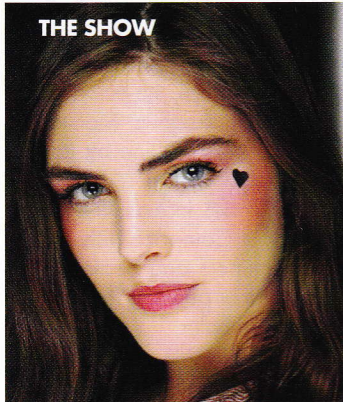
"The face had to reflect the clothes, which featured lots of metallic and plasticized fabrics with shimmering details," McGrath says.

### THE TRYOUT

"I swiped a lip topcoat on the lids," she says, "for a sheer texture to go with the outfits."



### THE SHOW



"I added luminizer; the cheekbones needed some dimension against the blush," McGrath says. "The overall change in the makeup colors made skin seem more delicate."

### THE PALETTE

Clockwise from left: CoverGirl TruShine Lipcolor in Valentine Shine, Scott Barnes Eye Ice in Glitterachi, and Nars The Multiple in Copacabana



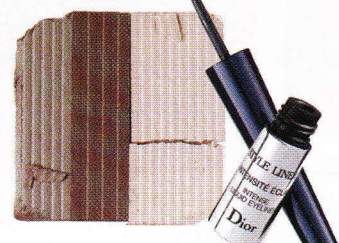
### THE SHOW



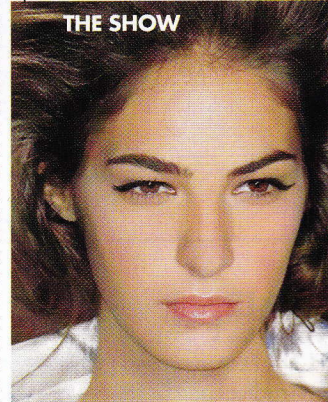
"The brown shadow was a bit boring on its own," she says. "It really required the depth of the black liner, which wasn't part of my initial idea, to punch it up."

### THE PALETTE

Clockwise from top: Shu Uemura Colorless Face Powder in Matte, Dior Style Liner in Black, and Max Factor MAXeye Shadow in Cocoa Crazy



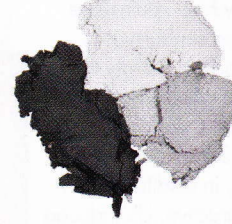
### THE SHOW



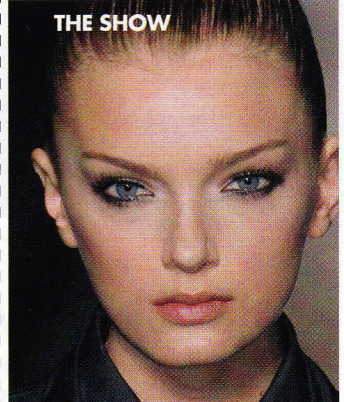
"I had originally planned on a coral mouth to go with the peachy blush," she says. "I switched to warm pink gloss, as it was fresher and less graphic."

### THE PALETTE

Clockwise from top left: Smashbox Eye Shadow Trio in Twilight; MAXwear Lipcolor & Gloss Duo in Opal Luminosity and MAXeye Liner in Night Club, both, Max Factor



### THE SHOW



"The smoky eye was too contrived. When the shadow was wiped away, the effect was perfect," she says. "Burgundy lips were nixed for nude gloss."

### THE PALETTE

Clockwise from top left: Stila Eye Shadow in Diamond Lil, Max Factor Lipfinity Moisturizing Topcoat, and CoverGirl Outlast Smoothwear Eyeliner in Onyx

